



BIRDWATCHING AROUND CAMBRIDGE



Great Crested Grebe
Podiceps cristatus

Funded by Community Assistance Program
TOWN OF CAMBRIDGE

Information prepared by
Birds Australia - WA Group
167 Perry Lakes Drive, Floreat WA 6014

Illustrations kindly prepared by
Judy Blyth, Pam Free, Susan Tingay
Photos by Trevor Stoneman

Number 51ab in a series of Bird Guides of Western Australia

This A3-sized brochure includes colour images of 37 birds that may be seen within the City of Cambridge. The listing is grouped in areas where the birds are likely to be found and includes the time of the year they are most prevalent.

The reverse side of the brochure lists all the birds, their normal location, if they are common, uncommon or rare and if they are resident or visitors.

Copies of the brochure are available from the City of Cambridge, or from the Perth office of Birds Australia.

WHAT IS BIRDS AUSTRALIA?

Birds Australia is a non-profit national organisation working for the enjoyment, study and conservation of Australia's birds. The WA group of Birds Australia has members statewide and offers a range of services to its members, including:

SAMPLE PAGE ONLY
The full A3 brochure is available from the Town of Cambridge or the office of Birds Australia WA

INTERESTED?

Contact us at:
Birds Australia Western Australia Inc.
167 Perry Lakes Drive
Floreat WA 6014 Weekdays 9.30 - 12.30 pm

Phone: (08) 9383 7749
Fax: (08) 9387 8412
Email: mail@birdswa.com.au
Web: www.birdswa.com.au

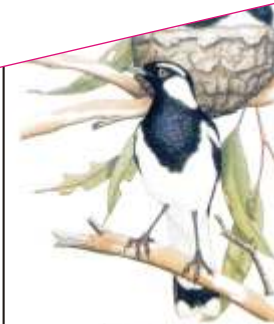


4. PERRY LAKES

The lakes area is popular for passive recreation with picnic facilities and parking. The lakes and surrounding Flooded Gums provide an excellent habitat for water and bush birds.



The rushes around the eastern lake are home and breeding area for birds including Purple Swamphen, Masked Duck and Blue Duck.



Magpie-lark
Grallina cyanoleuca

Look among the Flooded Gum for Western Gerygone, Galah and Magpie-lark.



Common Greenshank
Tringa nebularia

As the lakes dry out, waders may be seen feeding along the edges of the lakes. They may include Black-winged Stilts, Black-fronted Dotterels and Common Greenshanks.